

LEVEL UP WITH ADDUP

SERVICE SOLUTIONS FOR NEXT LEVEL ADDITIVE

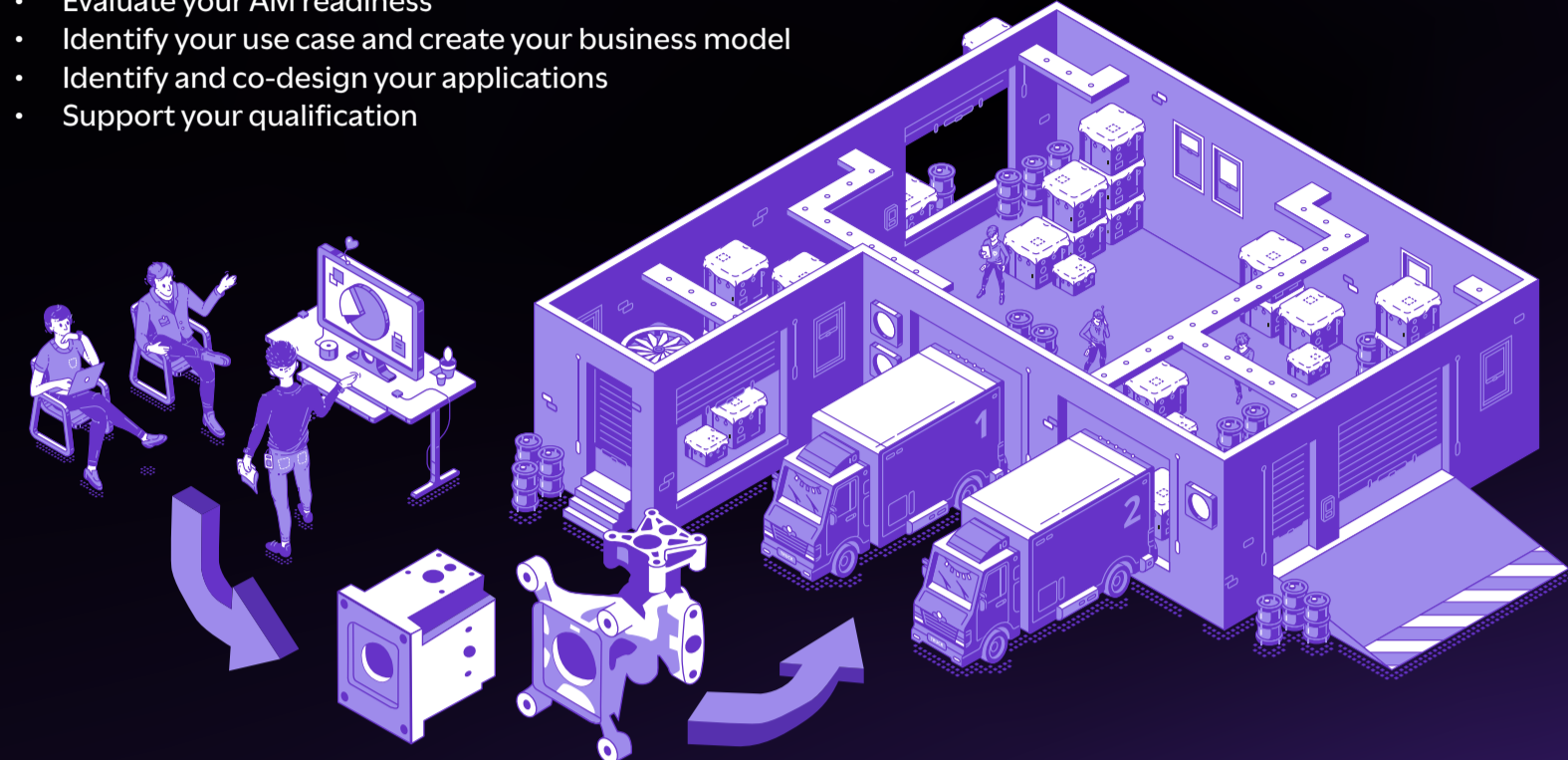
When you choose AddUp, you choose a partner who will be with you every step of your metal additive manufacturing journey with our new LevelUp service packages. AddUp is fully committed to the success of your project and remains present throughout every phase with training, consulting, digital solutions, machine maintenance, and service upgrades.

01 - START

START YOUR JOURNEY AND DEVELOP YOUR EXPERTISE

We don't just help determine if AM is right for you - we've helped build additive manufacturing facilities all over the world. Whether you're familiar with additive or just starting out, we're here to help build your future in Additive Manufacturing.

- Acquire basic knowledge in metal additive manufacturing
- Evaluate your AM readiness
- Identify your use case and create your business model
- Identify and co-design your applications
- Support your qualification



02 - LAUNCH

KICKSTART YOUR INDUSTRIAL ADDITIVE MANUFACTURING CAPABILITIES

During machine installation, you're up and running in only a matter of *weeks, not months*. Our team ensures a quick and easy installation, fully customized to the needs of your business.

- Machine operator & maintenance training
- Digitize and monitor your process with AddUp software training
- Define your future AM workshop
- Support for process, post process, and operations



03 - SCALE

After you're set up and printing successfully, AddUp remains by your side as a partner, addressing your needs for anything from onboarding new staff to achieving maintenance autonomy.

- Onboard new staff
- Upgrade your machine
- Advanced Additive training
- Support for material switch, relocation, validation, or requalification
- Optimize and scale your production
 - Processes
 - Applications
 - Materials
 - Quality
 - Energy use



A COMPREHENSIVE TRAINING CATALOG

Integrate metal AM seamlessly into your company with our diverse training modules tailored to your knowledge level in additive. Our AddUp Academy e-learning platform offers over 13 hours of exclusive content, with 100+ videos and 200 exercises, accessible 24/7 on any device, including:

BASIC KNOWLEDGE IN METAL ADDITIVE MANUFACTURING

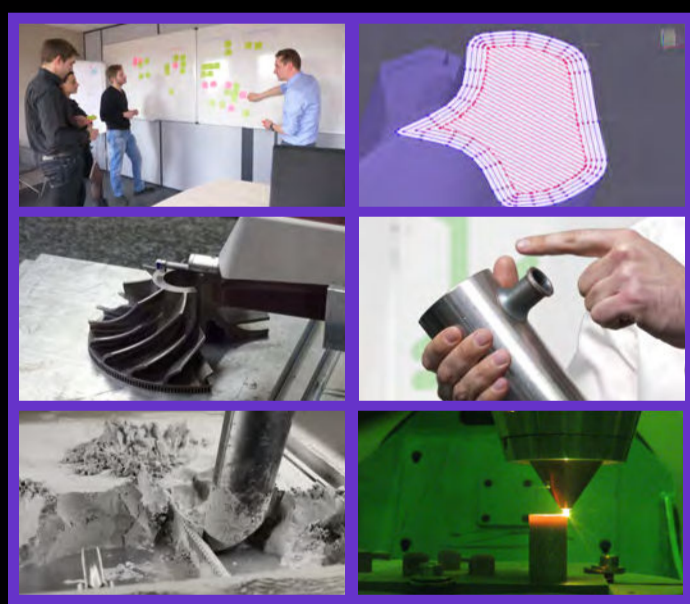
- The basics of additive manufacturing
- Understand L-PBF and DED technology
- Design for L-PBF Additive Manufacturing
- Advanced training in metal additive manufacturing

MACHINE INSTALLATION (included in machine purchase)

- HSE Management for AM activities
- Manufacturing strategies
- FormUp 350 - Operation and level 1 maintenance
- Modulo 400 - Operation and level 1 maintenance
- AddUp Dashboards training

TRAINING MODULES FOR ADVANCED AM USERS

- On-boarding training program
- L-PBF process parameters management
- Machine operation – level 2
- Machine preventive maintenance – level 2



CUSTOMER TESTIMONIAL

Our team has just returned fully delighted with this training. Everything contributed to a great success: the content, the quality of the trainers, the working environment.

Thomas de Lesquen,
Department Manager, Sabena Technics

A TEAM YOU CAN TRUST

Taking immense pride in the AddUp team is not just a sentiment; it's a cornerstone of our success.

Each member of our team embodies a dedication to excellence, a passion for innovation, and a commitment to achieving remarkable outcomes.

Together, we can forge the path towards groundbreaking solutions and redefine what's possible in our industry.

CONNECT WITH US



www.addupsolutions.com

AddUp SAS

13-33 rue Verte
ZI de Ladoux, 63118
Cébezat, France
+33 (0)4 73 15 25 00

AddUp Inc

5101 Creek Rd
Cincinnati, OH 45242
United States
+1 (513) 745-4510

AddUp GmbH

Campus-Boulevard 30
52074 Aachen
Germany
+49 241 4759 8581

